

L'Arche Community:

assisted-living; a yard to share with neighbours

2012-2014
 Responsibilities:
 All architectural tasks
 collaboration:
 Neoteric Architecture

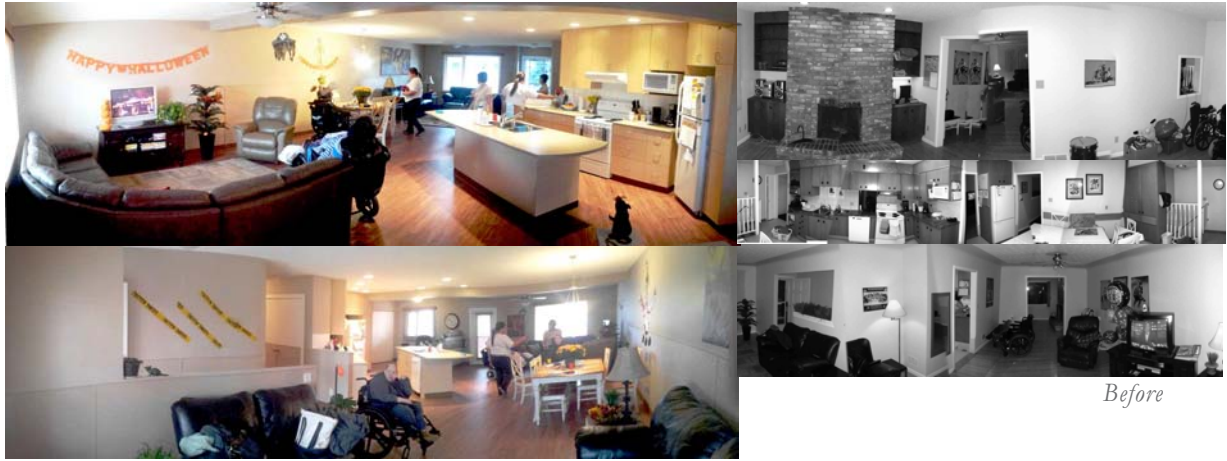


The Richmond House

converting a standard assisted-living household into a supervisable and social community
 2012-2013

Calgary
 Responsibilities:
 All Architectural Tasks

collaboration:
 Neoteric Architecture



Hope Street House

unsegmenting an historic house for a busy modern family, facade improvements

2010-2013
 Calgary
 Responsibilities:
 Collaborating Project Designer

collaboration:
 Devonshire-Baker Architectural Design



The Banff Centre Music and Sound Building Improvements

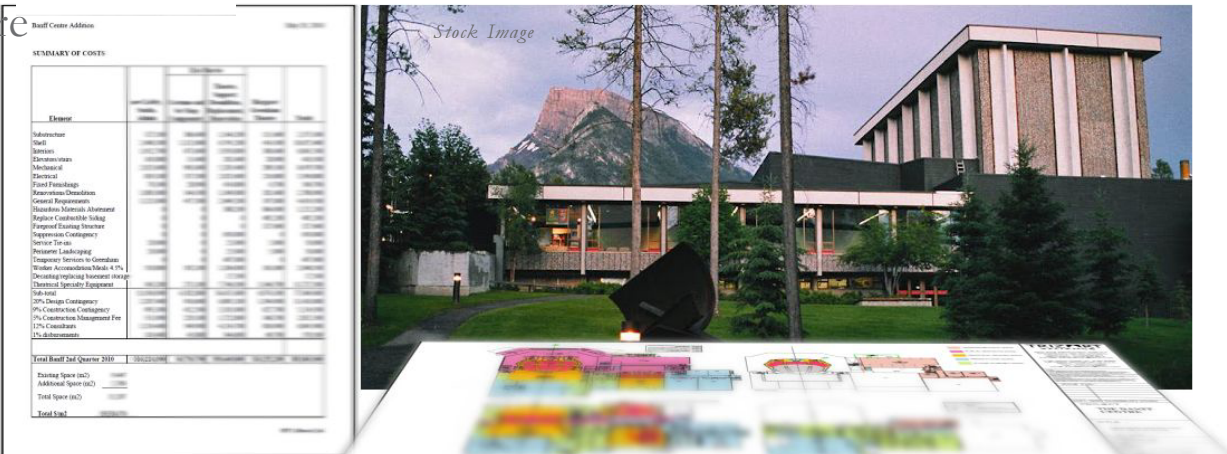
Acoustic Analysis Supervision
 Rolston Hall Seating Configurations
 2011
 with
 Stantec Architecture



The Banff Centre Major Facilities Upgrade

Cost Analysis Supervision
 Building Code Review
 2011

with
 Stantec Architecture

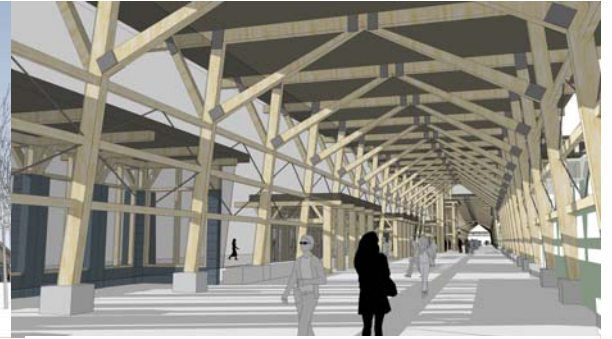
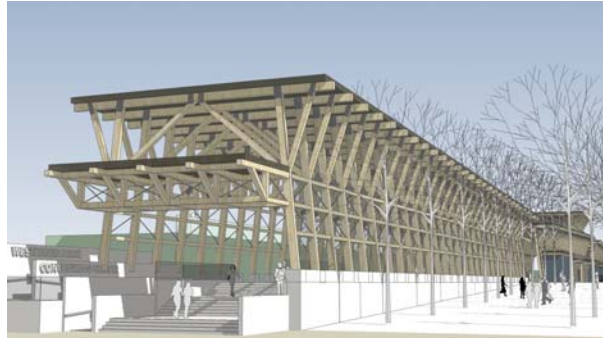
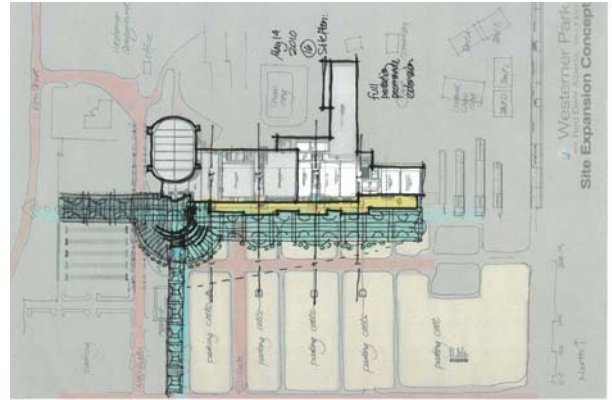
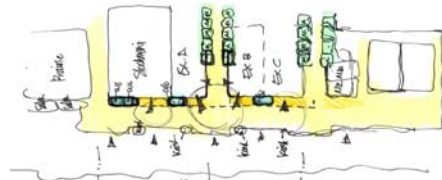


Westerner Park Expansion & Masterplan

2011

Red Deer Alberta

Responsibilities:
 Project Designer



Sketch-up model
 by Stantec



with
 Stantec Architecture

Alberta Treasury Branch

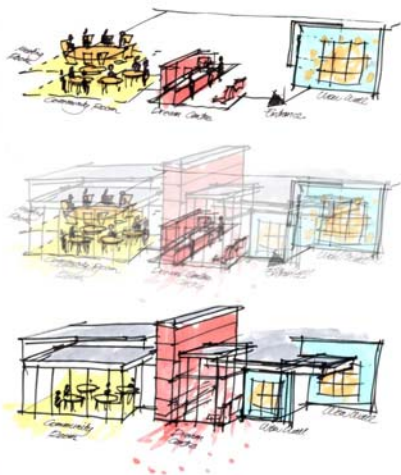
2010-2011

Calgary

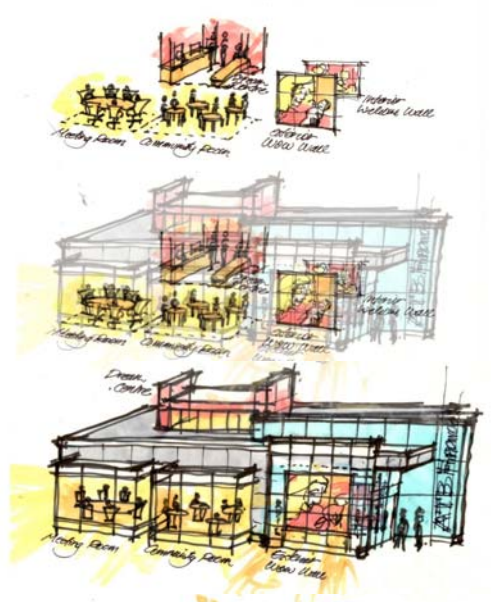
Responsibilities:
 Preliminary Conceptual
 Design
 for
 Experimental
 Customer Service
 Concept

TOWARD A SYSTEM FOR INTEGRATING ATB RETAIL STRATEGIES INTO AN ARCHITECTURAL CONCEPT

PROCESS EXAMPLE 2
 TOP PRIORITY PILLAR: **COMMUNITY CONNECTION**
 TOP PRIORITY TACTICS: **1) DREAM CENTRE**
2) COMMUNITY / MEETING ROOMS
WOW WALLS EDU-TAINMENT



PROCESS EXAMPLE 1
 TOP PRIORITY PILLAR: **COMMUNITY CONNECTION**
 TOP PRIORITY TACTICS: **1) COMMUNITY / MEETING ROOMS**
2) WOW WALLS EDU-TAINMENT



with
 Stantec Architecture

**Fraser Tower:
 Penthouse
 Design,
 Fire
 Remediation**
 Yellowknife NWT
 2010-2011

Responsibilities:
 Project Administration
 Project Designer
 Damage inspection
 supervision

with
 Stantec Architecture



**Medical
 Office
 Building**
 2010-2012
 Calgary

Responsibilities:
 Project Administration
 Project Architect
 Project Designer

with
 Stantec Architecture



**Vocational
 Rehab
 Research
 Institute**
 Calgary 2010
 Concept Design



**Windsor Park Community Centre
 Revitalization**

2008-2009
 Calgary
Responsibilities:
 Partner in charge
 Project Administration
 Schematic Design
 Design Development
 Working Drawings
 Construction Supervision



**The Sorrento
 Family
 Retreat and
 Conference
 Centre**

*Project Designer,
 Project Architect*

with
 IBI Calgary 2006-2007

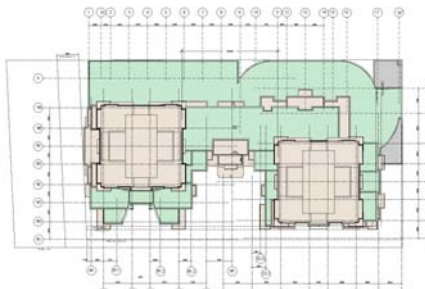
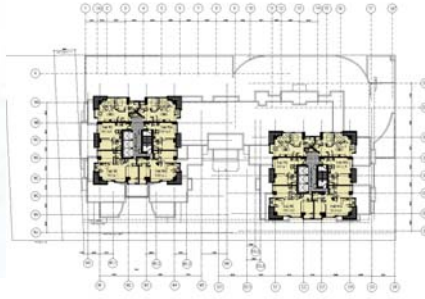
*Phased 23 Acre,
 mission-responsive,
 multi-decade plan:
 for community-facilitat-
 ing faith-based and
 secular recreation and
 education;
 on Lake Shuswap,
 British Columbia*



Manu Chugh
 Calgary
 2005-2006

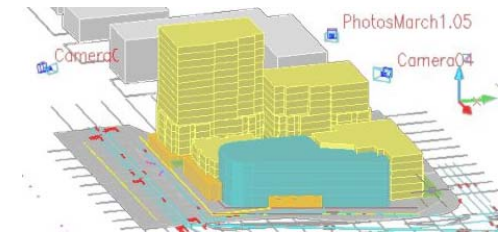
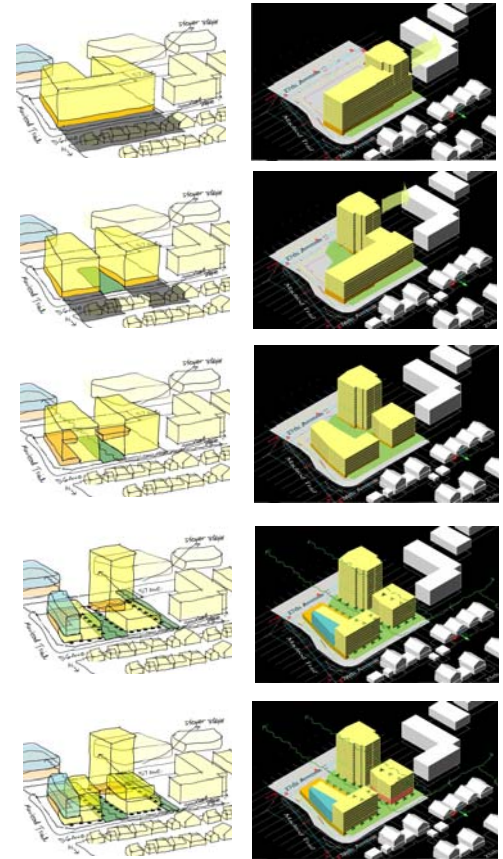
Lausanne Montreux
 Project Designer, Project Architect, Project Manager

Traditional massing, modern details, streetscape integration, 450 units, 200 million dollars, a sideyard park and forecourt, 52 storeys, and a parkade buffering busy train tracks



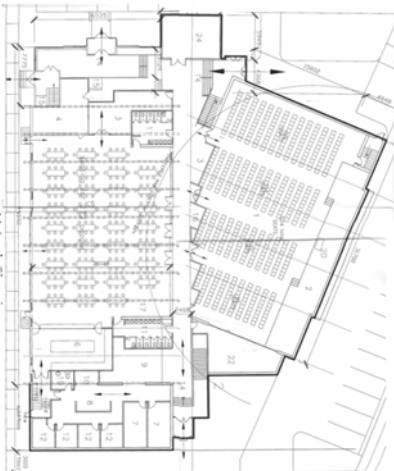
Kramer Mazda Site
 Project Designer

Moderating impact, including shared spaces and paths for the surrounding community, view modelling, 250 residential units, office, commercial.

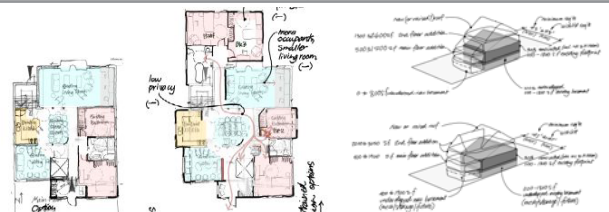
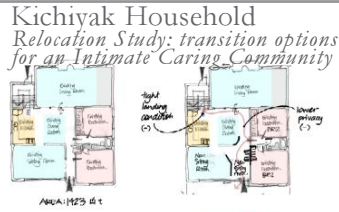


Bathory Associates
 Calgary
 2004-2005

McDougall United Church Expansion
 Massing and Facade Design



L'Arche
 Calgary
 2004



Prototypical Household *Block Schematic Space Studies: an Intimate Caring Community*



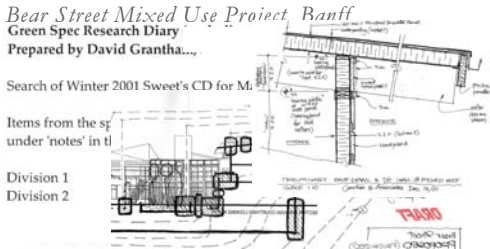
MCC
 Calgary
 2003 - 2004

Office/Classroom/Public Space Expansion *facilitating a Welcoming Educational Community*



Zeidler Carruthers
 Calgary
 2001 - 2002

Green Materials Sourcing



but what a Gingerbread House...

Competition-Winning Design



Gibbs Gage
 Calgary
 1998 - 2001



Alberta Stock Exchange *Entrance Design*

Office Building on a High-Speed Road *Concept Design*



Shaw Studios
Commission-Winning Schematic Design

*Conceptual Planning:
 a Communal Streetscape*

Bonavista Village Retirement Residence *Design Development
 Refinement: Plans, Selected Facade Elements, Interior Concepts*

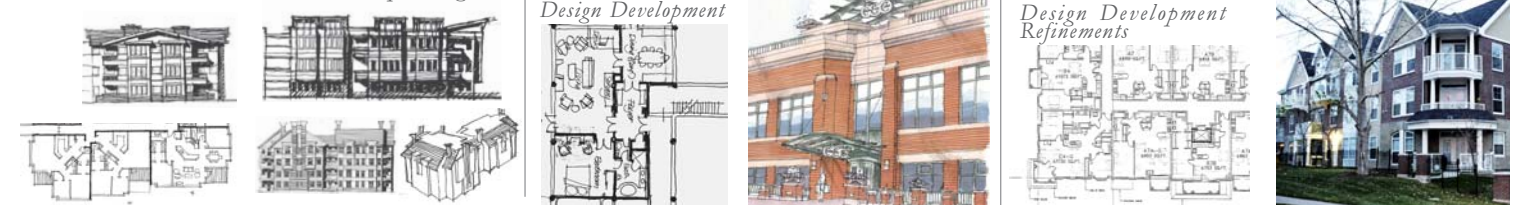
Bonavista Estates Condominiums,
*Assignment: a 'Ranch Bungalow' Condo Block
 Massing and Facade*



Multi-Tenant *Concept Design*

Warehouse to Hotel *Design Development*

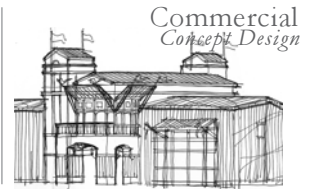
Garrison Woods
*Design Development
 Refinements*



Gibbs
 Gage
 (cont'd)

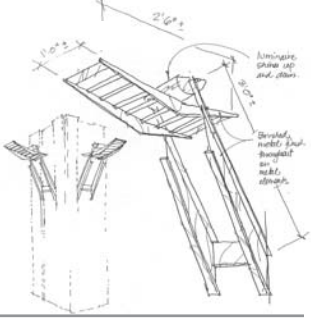
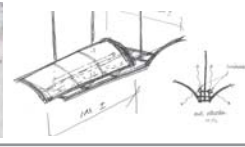
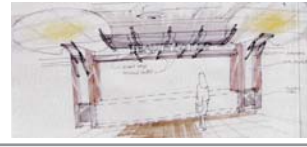
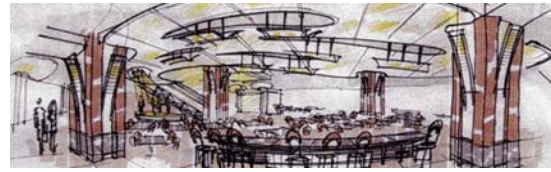


The Princeton
 Marketing Centre
 Project Design

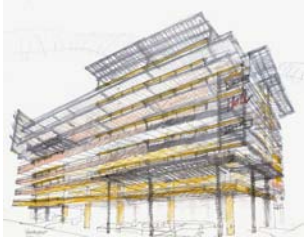


Commercial
 Concept Design

Scotia Place Office Building Edmonton
 Amenity Areas Project Design



Singleton
 Calgary
 1998



Assignment: Beckoning Drivers
 Banker's Hall Parkade Schematic Design



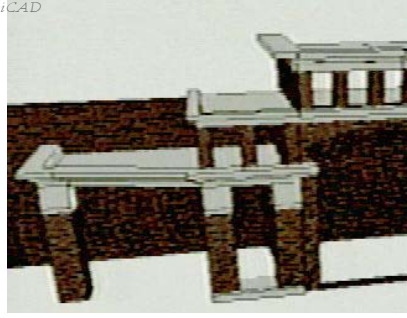
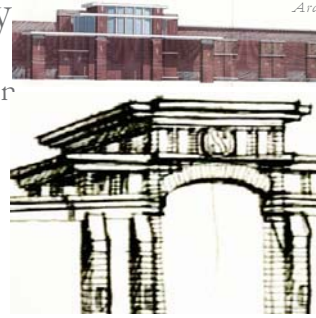
Assignment: Grace for the
 Trees of Stephen Avenue
 Project Design



these images (only) by Zal Japouch

Cohos
 Evamy
 Calgary
 Edmonton
 1995 - 1998

Safeway Calgary Assignment: Commercialism in a Warehouse Style Facade Design

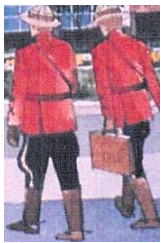


ArchiCAD



Nortel Wireless Networks
 Cafeteria Schematic Design

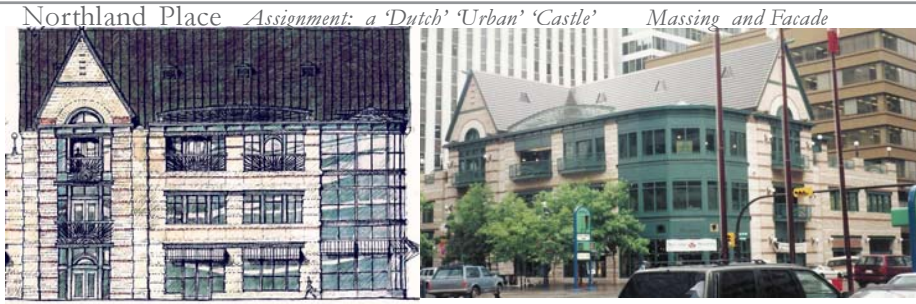
RCMP K Division Headquarters Edmonton Aesthetic Design Exterior and Feature Interior Spaces



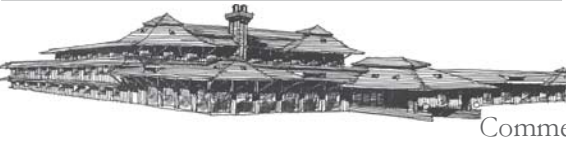
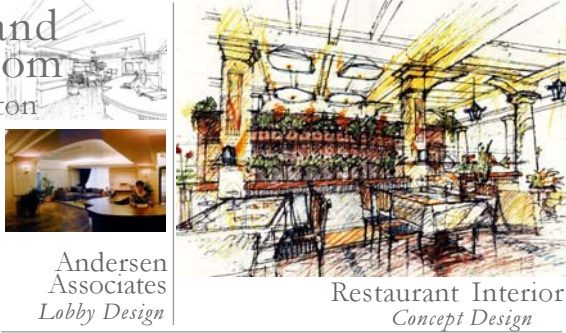
Assignment: "Resemble Regimental Dress" "Recall a Fort"



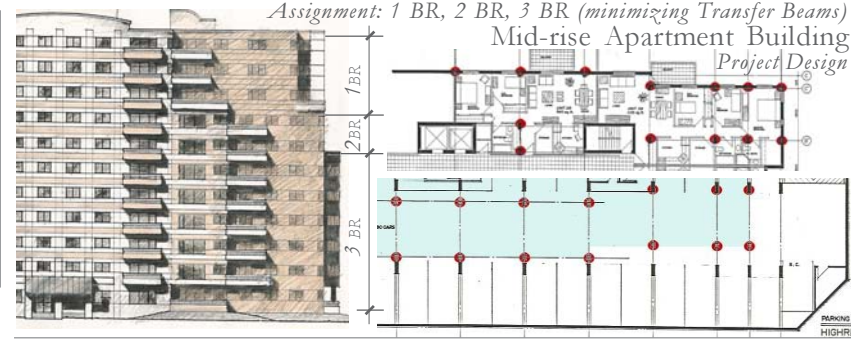
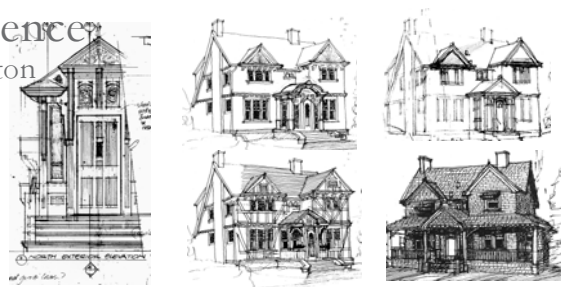
Cohos
 Evamy
 (cont'd)



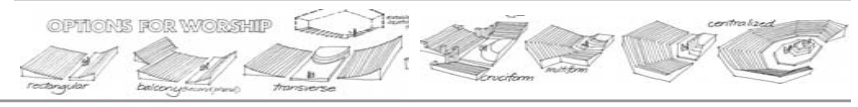
Holland
 Norbom
 Edmonton
 1990 -
 1995



Residences
 Edmonton
 1995



SMR
 Edmonton
 1990



Vaitkunas
 Jamieson



RL
 Wilkin
 Edmonton

