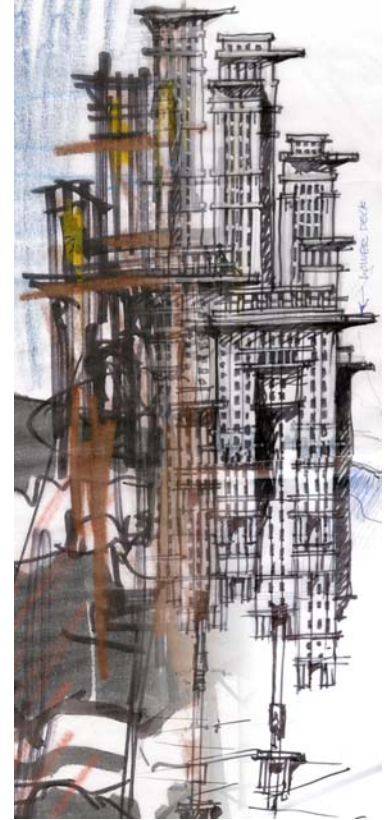




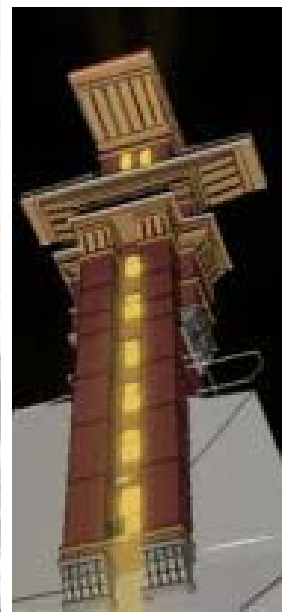
HOUSE FOR A MOUNTAIN CLIMBER



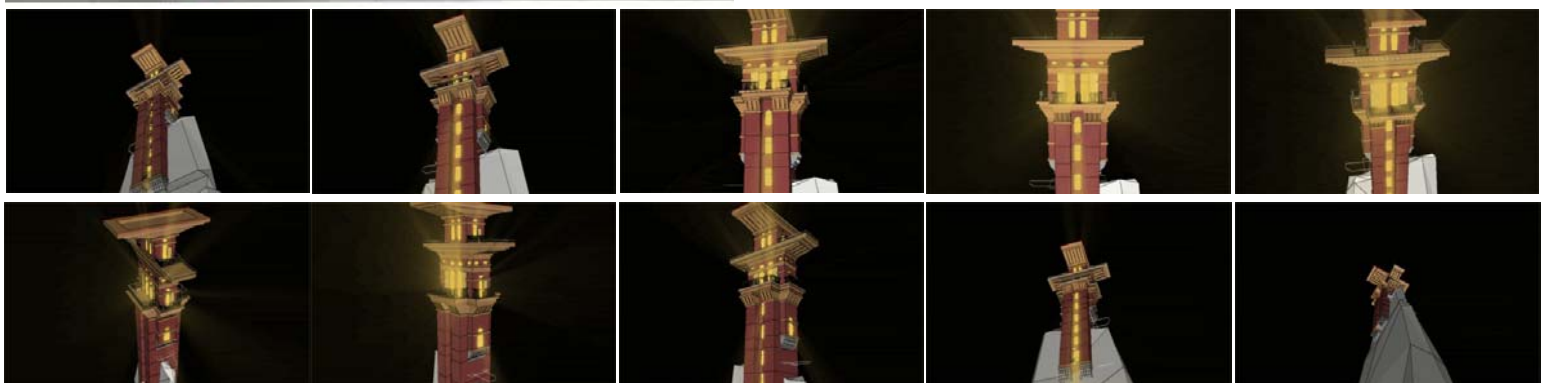
Initial Massing Concept Studies
'Climber Village': Felt Pen on Trace



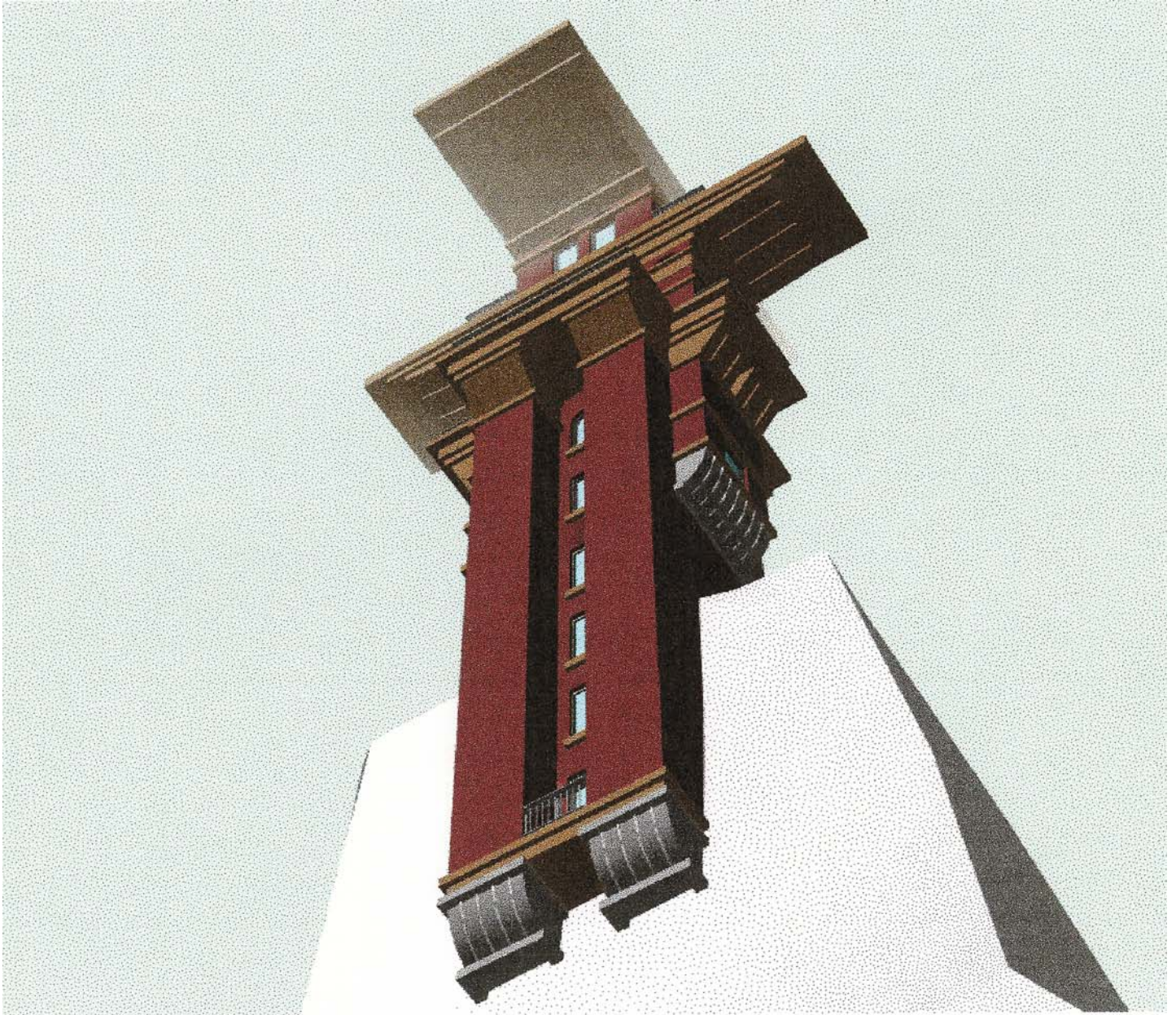
Proportion Study: Felt Pen on Trace



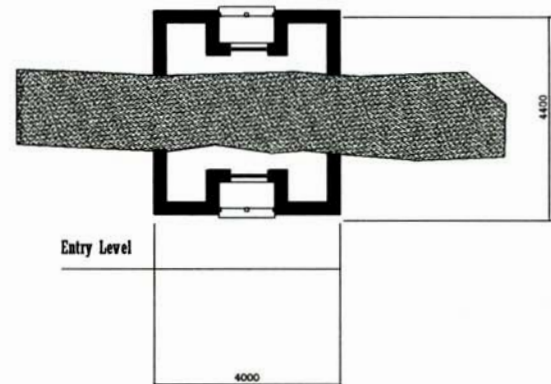
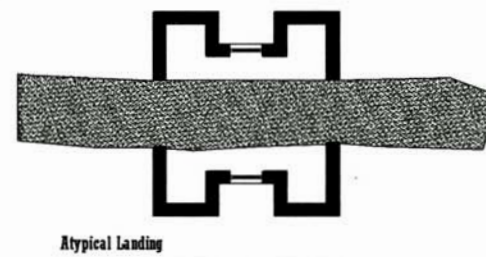
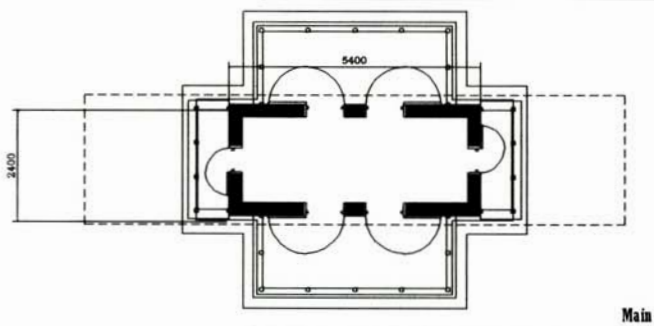
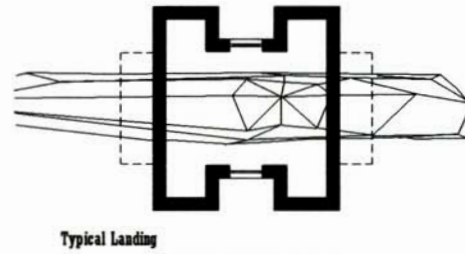
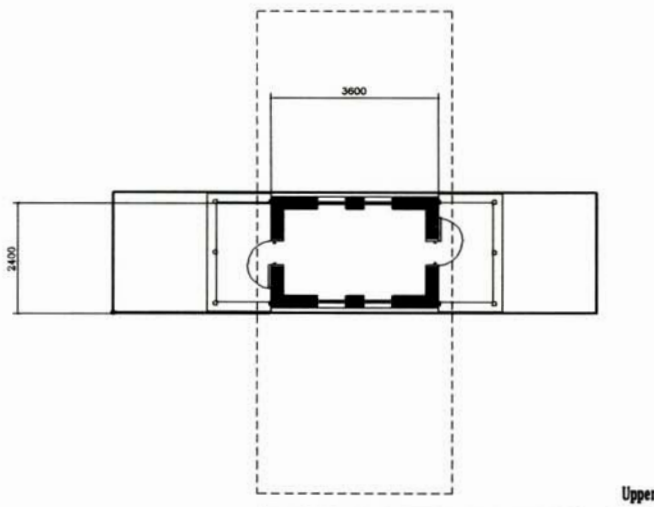
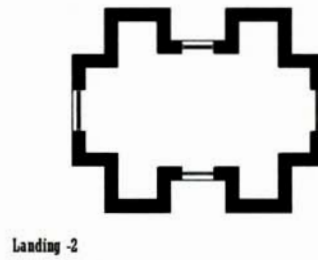
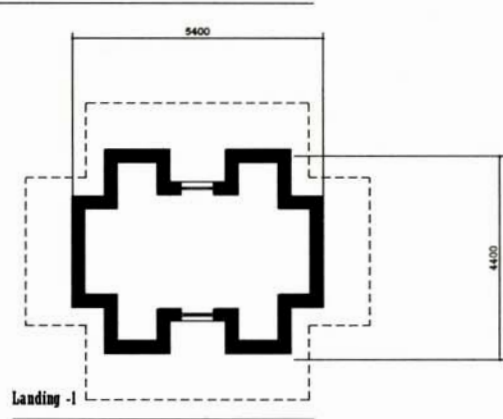
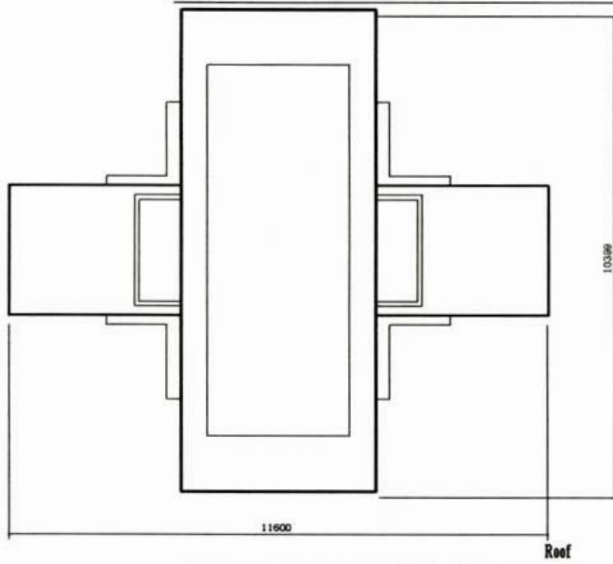
Initial Design
Sketch:
Marker on
Trace



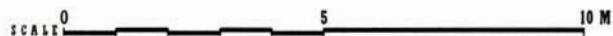
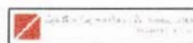
AutoCAD ADT



HOUSE FOR A MOUNTAIN CLIMBER



HOUSE FOR A MOUNTAIN CLIMBER



AutoCAD ADT



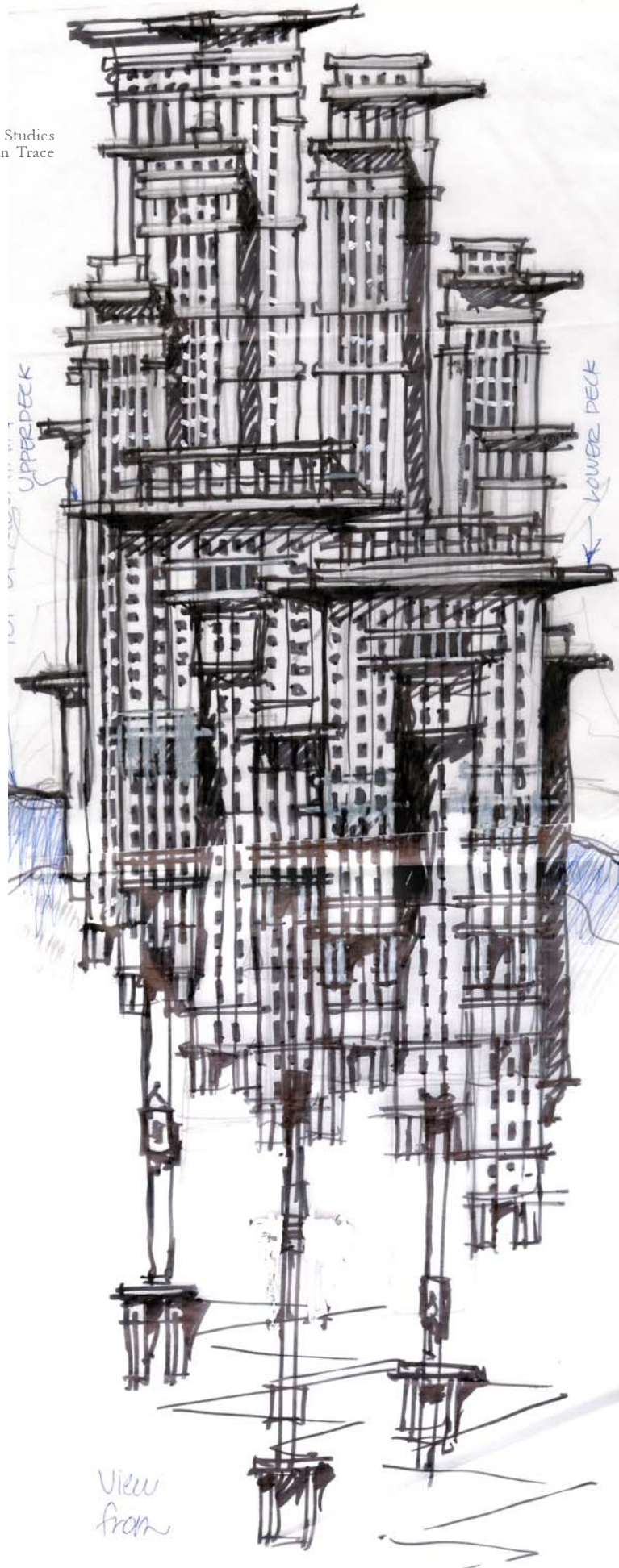
HOUSE FOR A MOUNTAIN CLIMBER



Initial Massing Concept Studies
'Climber Village': Felt Pen on Trace

CONCEPTUAL SKETCH
GINGERBREAD HOUSE
CARRUTHERS & ASSOCIATES

Initial Massing Concept Studies
'Climber Village': Felt Pen on Trace





Initial Design Sketch
Marker on Trace

AV HOUSE FOR A MOUNTAIN CLIMBER, 1/4 scale (1/4"=1")
Carruthers & Associates D. Grantham, proj. ds.
Ticino Restaurant M. Wespi, Chef
Nov. 29 2001



Proportion Study:
Felt Pen on Trace

